

# Southern Blue Ridge Fire Learning Network Workshop 12

**“Lessons Learned from the 2016 Fires and  
Next Steps to Advance Resilient Landscapes and Communities”**

**Margit Bucher**

**Beth Buchanan**



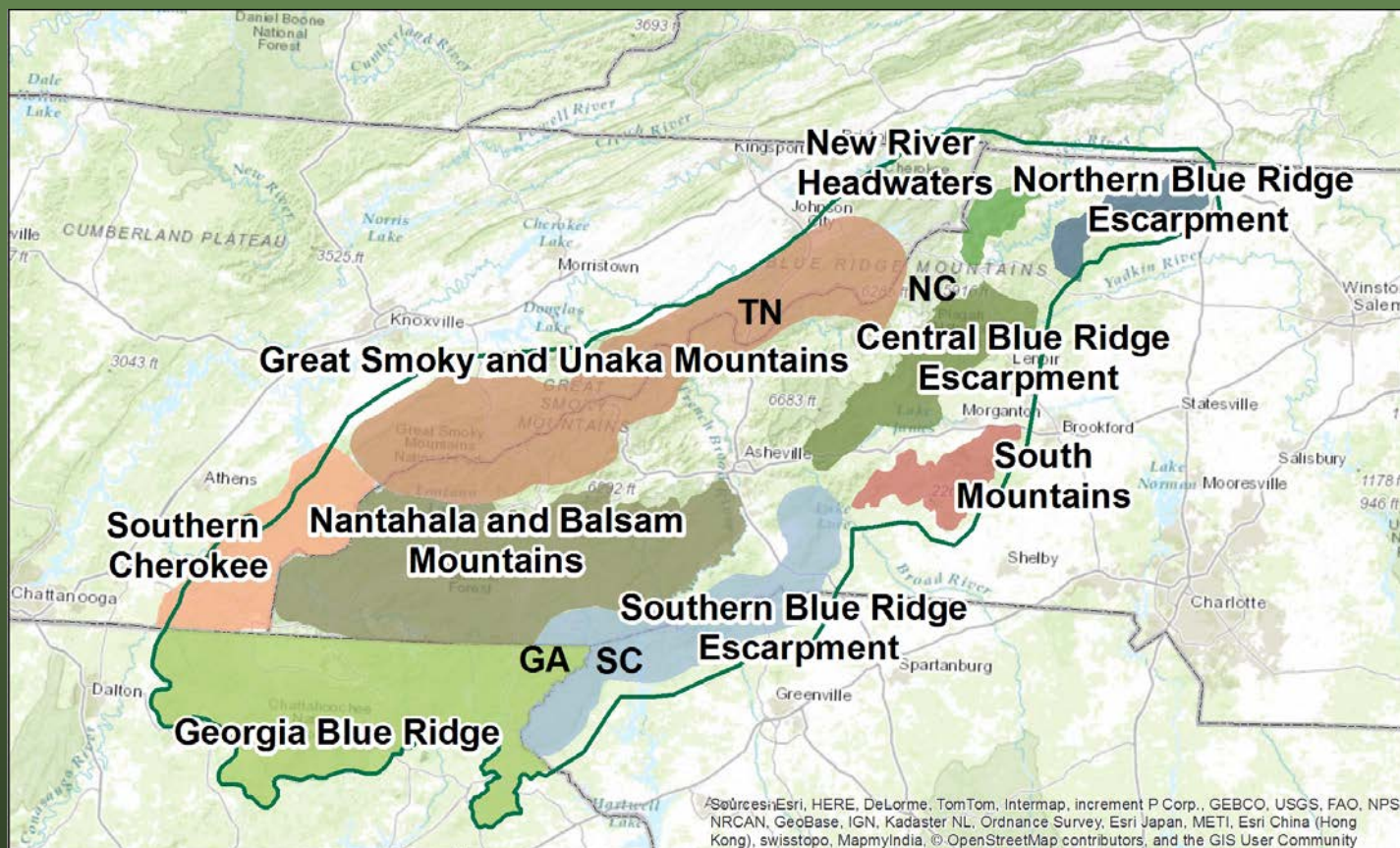




The Nature Conservancy  
Protecting nature. Preserving life.™



SBR FLN



- Landscape Teams
- Steering Team
- National Network
- “Networker”
- Webinars
- Annual SBR FLN Workshop



The Nature  
Conservancy

Protecting nature. Preserving life.™



# Our Hosts: The Georgia Blue Ridge FLN Team\* & the Chestatee/Chattahoochee RC&D Council\*\*

## The Planning Team:

Mike Davis\*

Jim Wentworth\*

Malcolm Hodges\*

Judy Toppins\*

Frank Riley\*\*

Beth Buchanan

Helen Mohr

Wendy Fulks

Margit Bucher

Brenda Wichmann

Gretchen Coll

Wendy Fulks

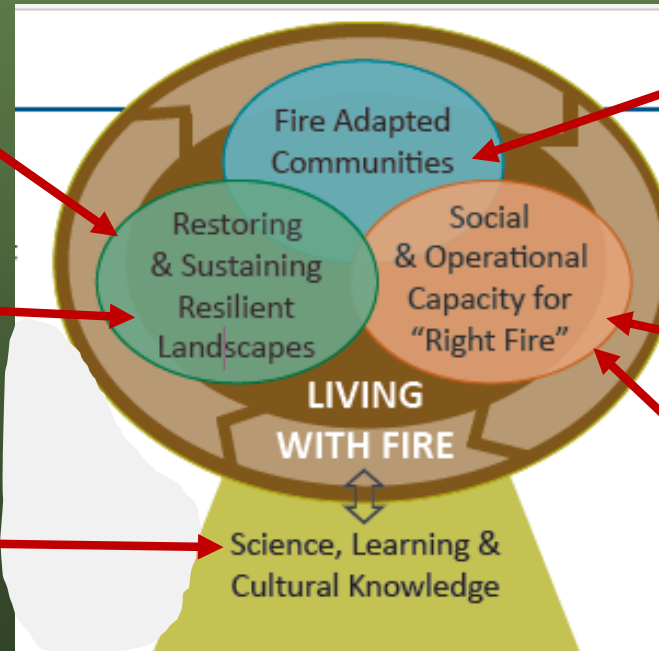


# Promoting Ecosystem Resilience and Fire Adapted Communities Together (PERFACT)

Fire Learning Network (FLN)

Burned Area Learning Network (BALN)

Indigenous Peoples Burning Network (IPBN)



Fire Adapted Communities Learning Network (FAC Net)

Prescribed Fire Training Exchanges (TREN)

Scaling-up to Promote Ecosystem Resiliency (SPER)

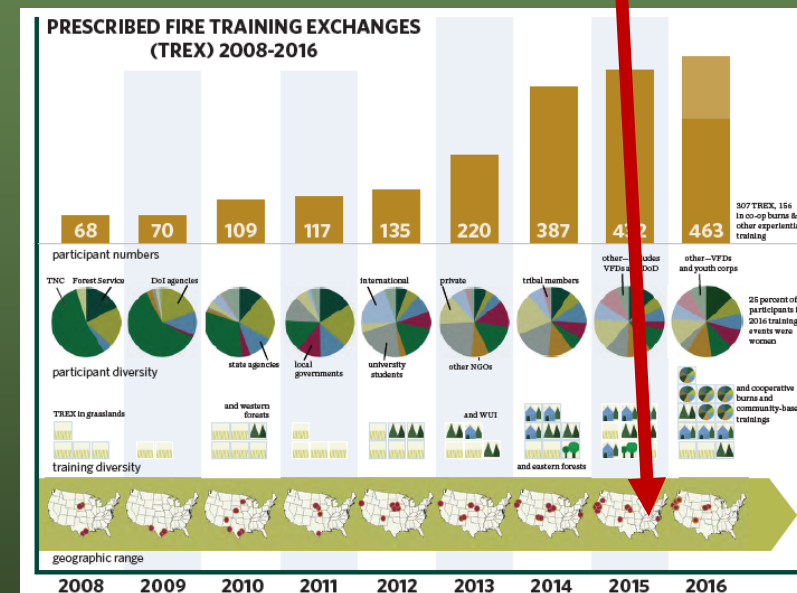
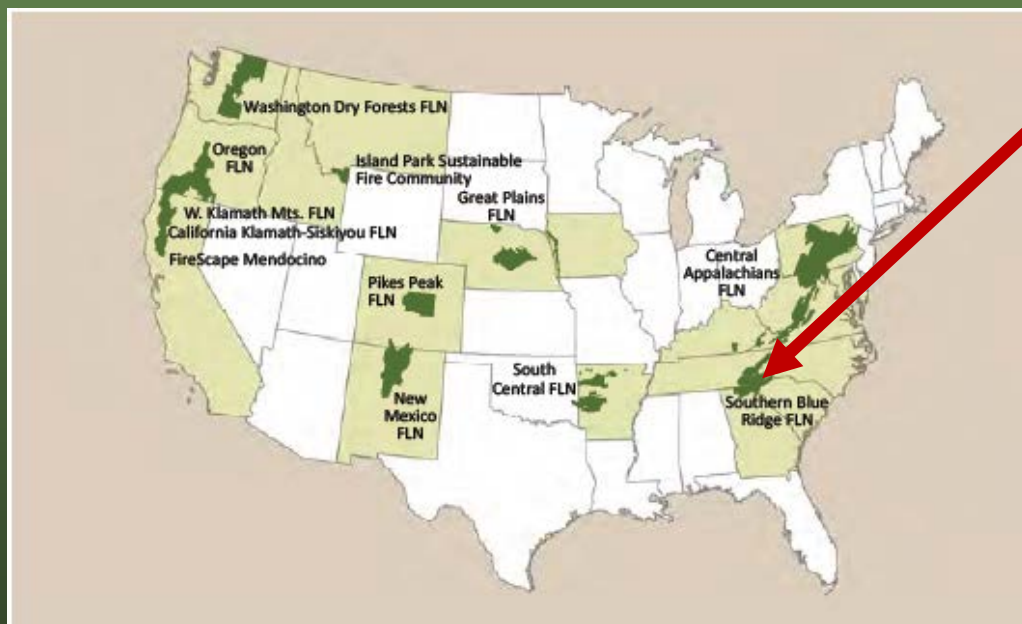




The Nature Conservancy  
Protecting nature. Preserving life.™



# SBR links To PERFECT through FLN & FAC Networks and TREX



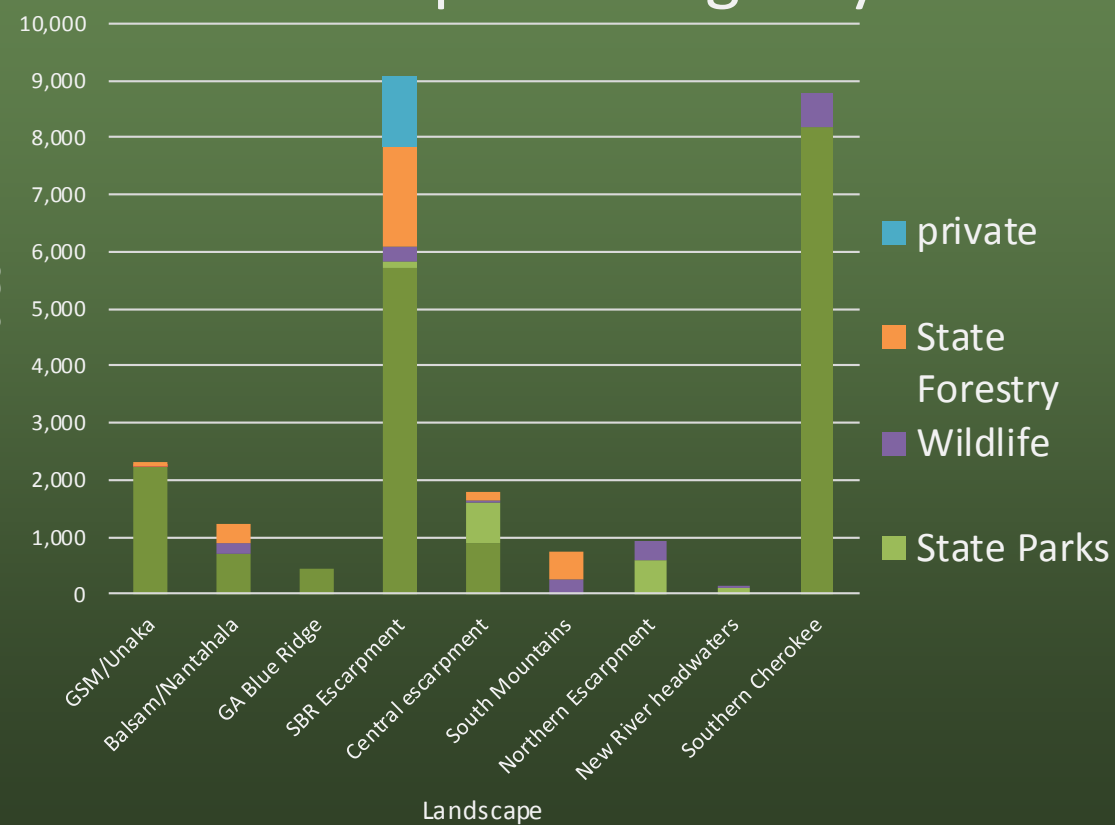


# SBR FLN Accomplishments

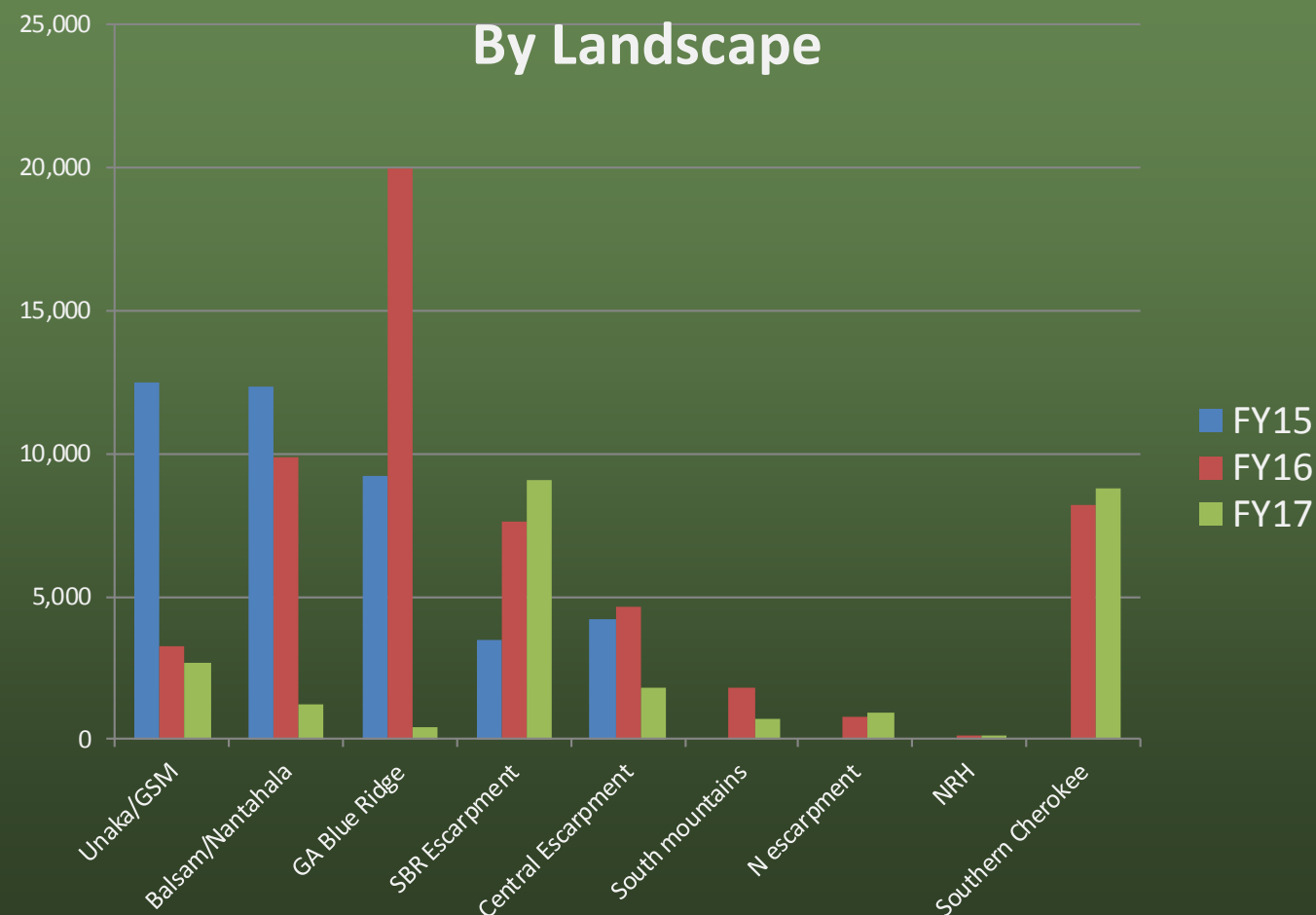
- Common vision
- Landscape assessments
- Tools to prioritize and forecast impact of management
- Collaboration increased resources: CFLR & Joint Chiefs Proposal
- Partnership with Joint Fire Science Program: CAFMS
- Shared outreach material
- Building capacity with USFS Region 8 support: crews to build capacity; expanding Fire Adapted Communities (FAC)



## FY17 Controlled Fire Acres By Landscape And Agency

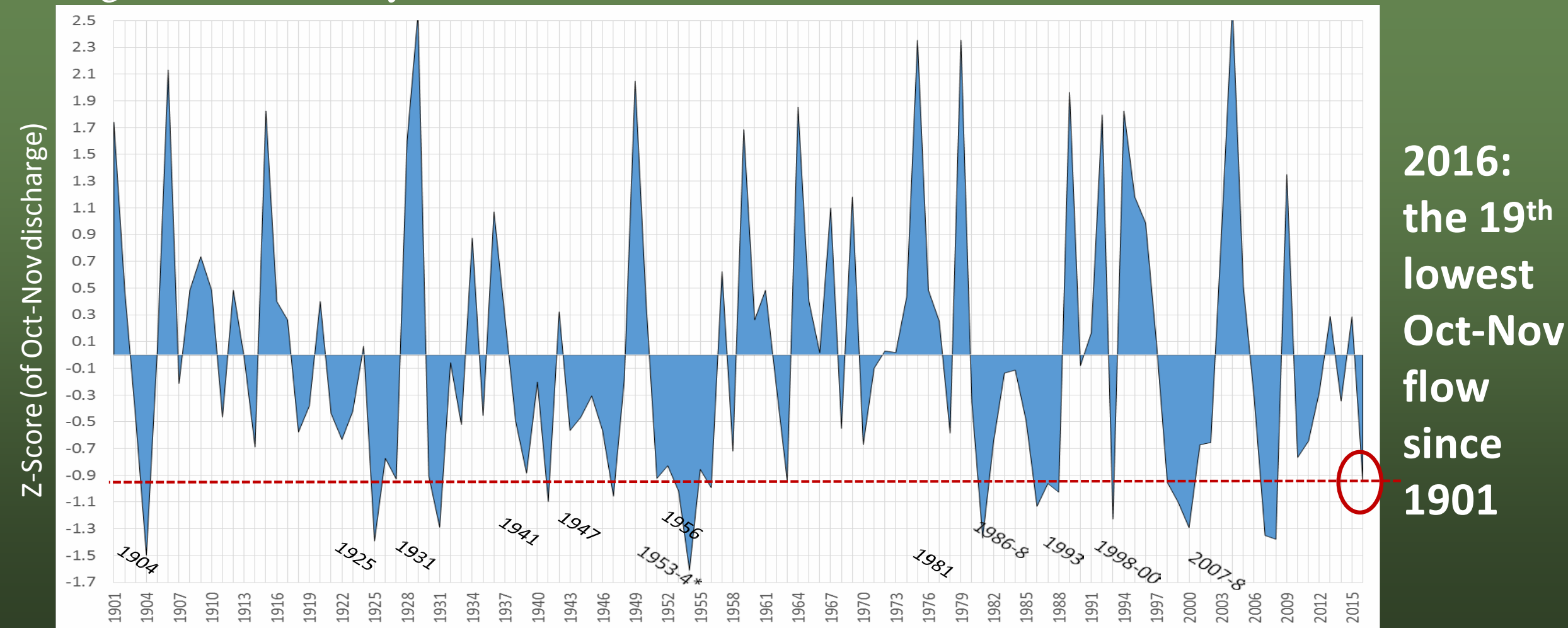


## SBR FLN Controlled Burn Acres 'FY15-17 By Landscape





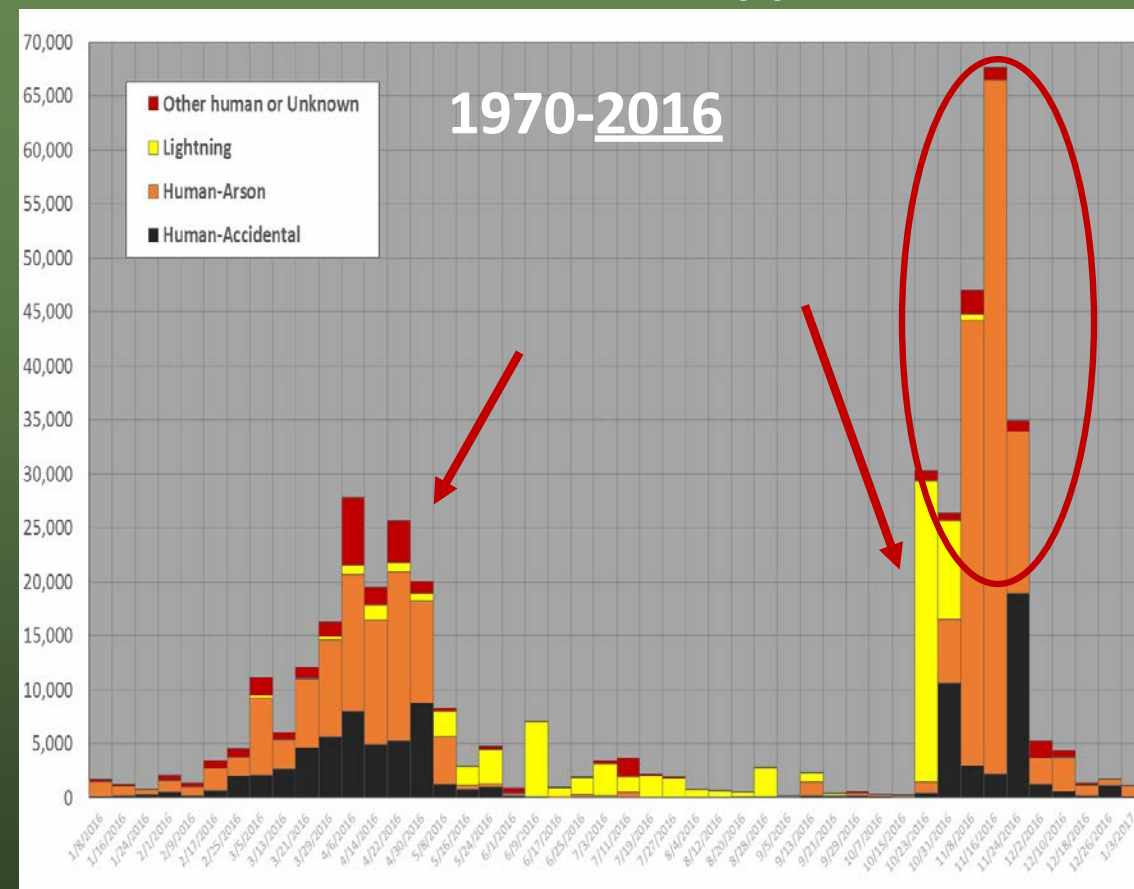
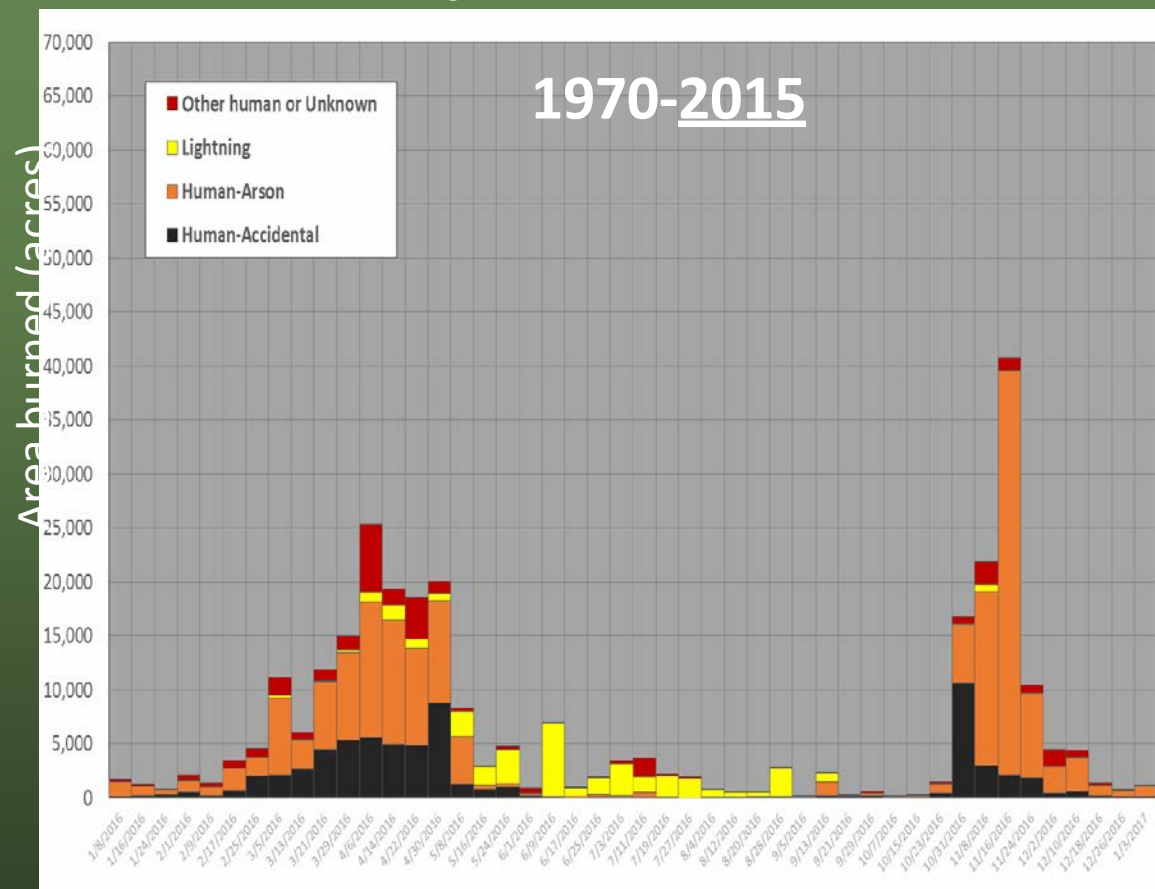
## Drought as measured by French Broad River flow



\*Record low Oct-Nov flow: 1954

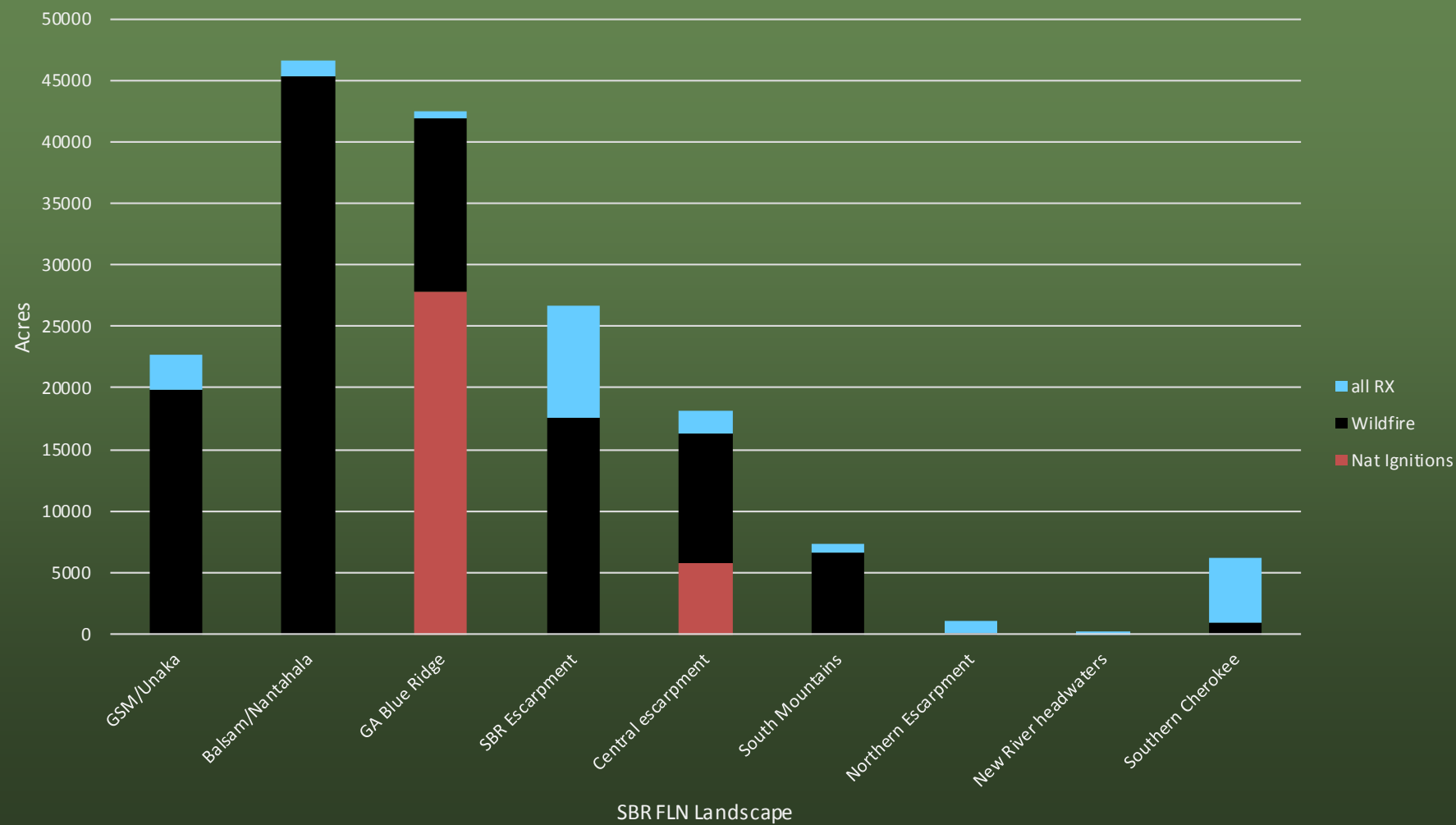


## The Seasonality of Wildfire Causes on Federal Lands of the Southern Appalachians

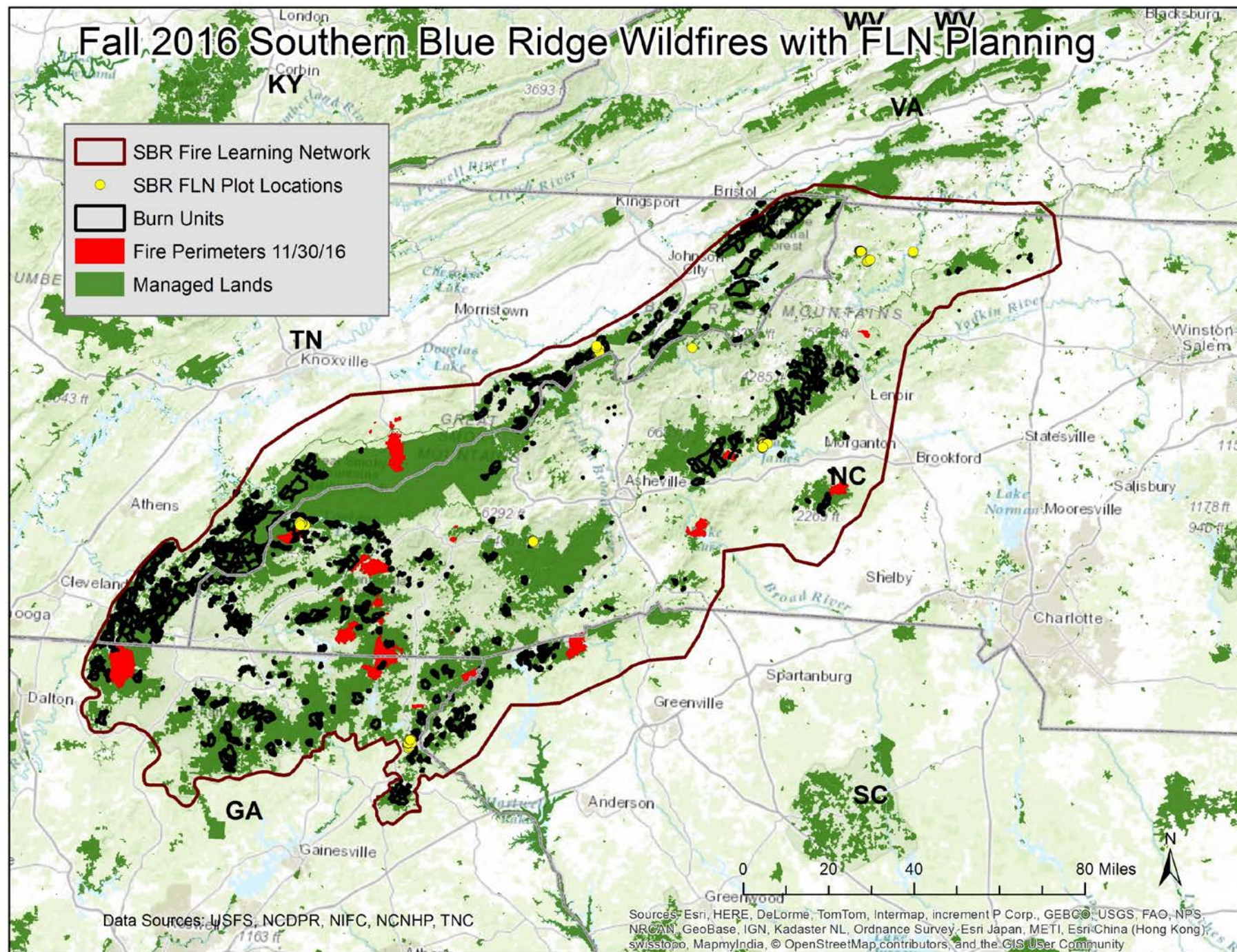




FY17 All Fire Acres By Landscape





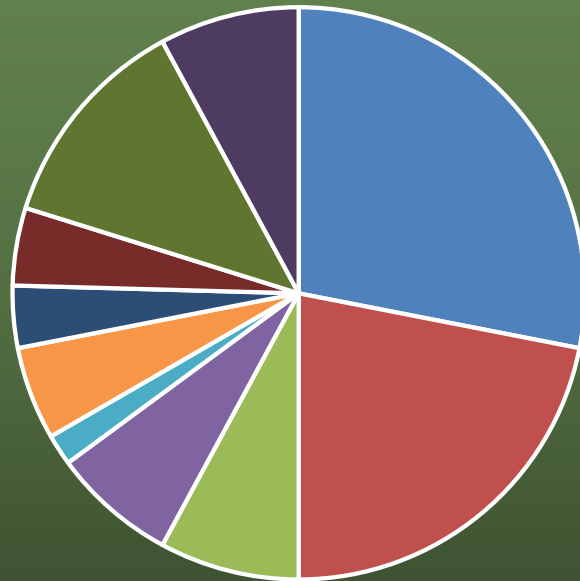




A horizontal number line representing distance in miles. The line is marked with numbers 0, 10, 20, 40, 60, 80, and 100. Below the line, there are four shaded rectangular segments: the first from 0 to 10, the second from 10 to 20, the third from 20 to 60, and the fourth from 60 to 100. The word "Miles" is written below the line.



# Who is this workshop?



- USFS
- NGO's & Landtrusts
- State Parks
- State Forestry Agency
- State Wildlife
- RC&D
- NPS
- USFS research
- University
- other





# What to expect?

- USFS perspective from Tony Tooke, Regional Forester
- Three Wildfire case studies to explore operations, communication and ecological impacts – what challenges and opportunities lay ahead?
- Connect human communities to resilient forests through water? Could learning to live with fire directly benefit people?
- See fire effects first hand, meet with responders and community
- Update on regional fire history research and monitoring results





The Nature  
Conservancy

Protecting nature. Preserving life.™



# What we want from You:

- Moving forward with fire: Discuss challenges and opportunities ahead from different perspectives
- Inform goals and work plans for FLN landscapes and hopeful FAC expansion



The Nature  
Conservancy

Protecting nature. Preserving life.™



# Please:

- Phones Off
- Follow “Golden Rule”
- Be on time

## Enjoy!

## Thank you for participating!