

ROCK MOUNTAIN FIRE

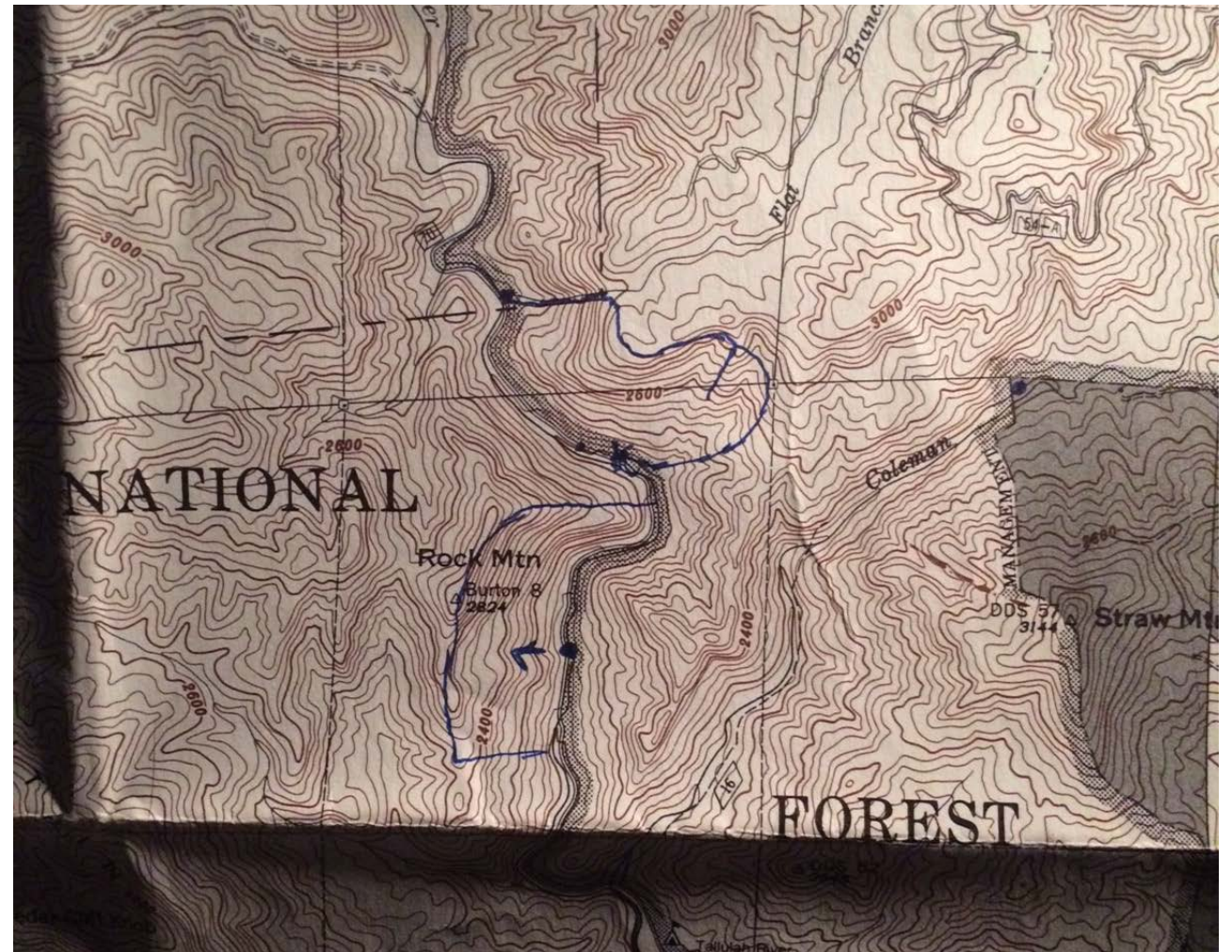
Southern Blue Ridge Fire Learning Network Workshop

May , 2017

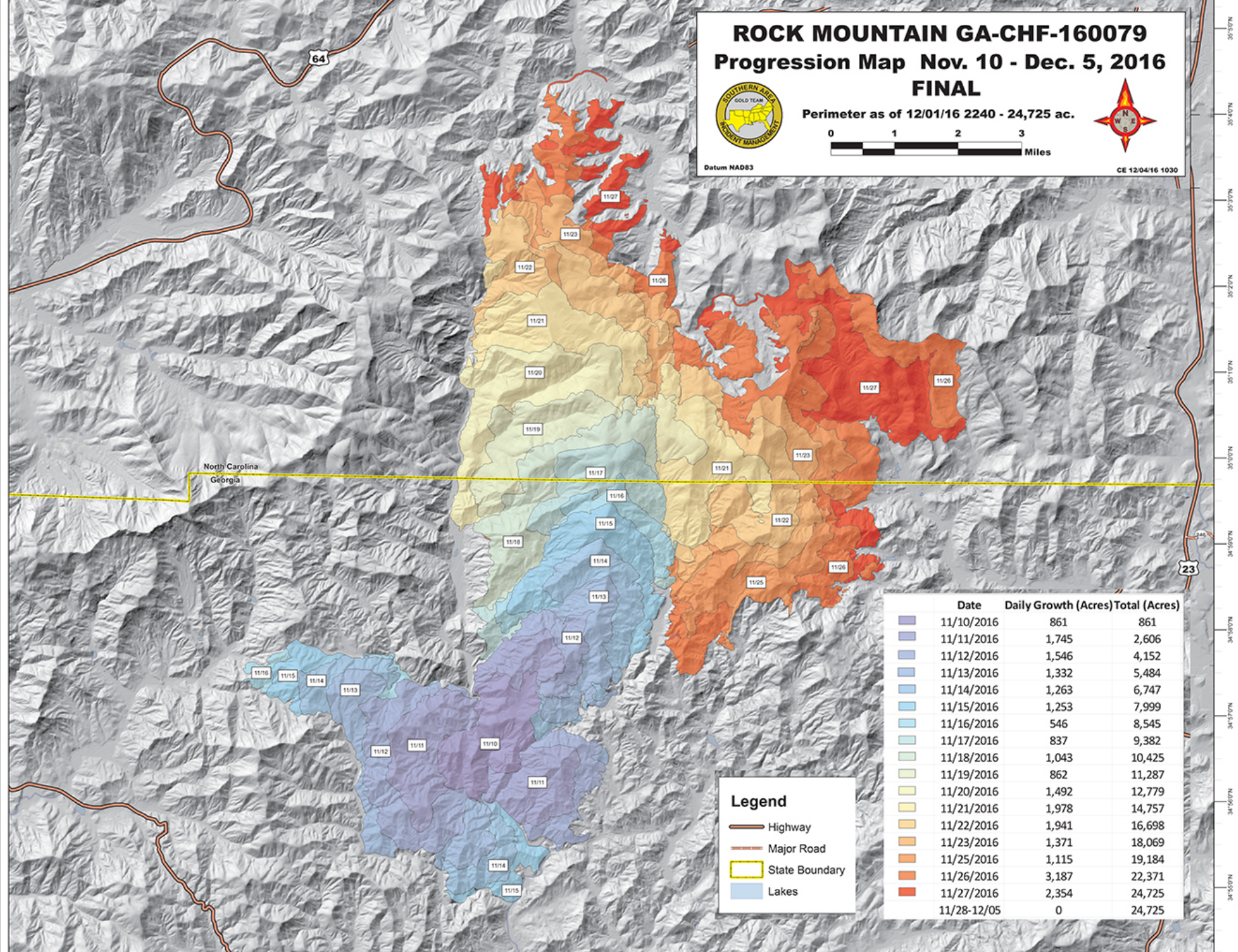
Case Study and Field Trip

Ignition Points

The first shift...





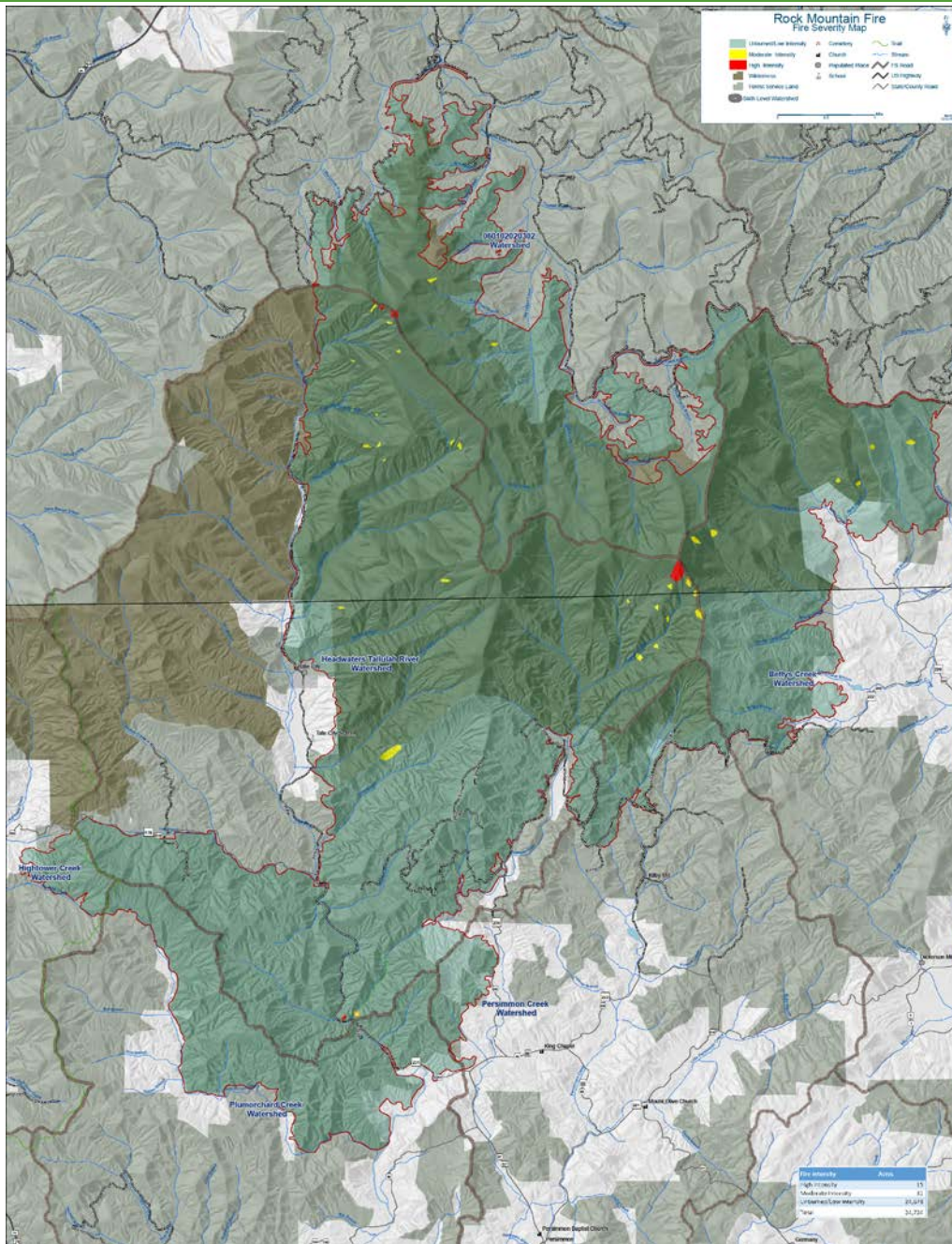


And the next
25 days



Photos courtesy of The Clayton Tribune





Rock Mountain Fire Severity Map Burned Area Emergency Response (BAER) Team Product



Communications

Public Information:

- Daily updates:
 - o Media contacts
 - o Constant Contact subscribers
 - o Forest Website
 - o Facebook and twitter
 - o Text messages
 - o Trapline
 - o InciWeb
- Community meetings
- Wildfire Prevention Team, schools
- Coordination with local, state, national and international media
- Interagency communication, SAC coordination
- New strategies:
 - o Use of Constant Contact
 - o Use of existing forest Facebook and twitter
 - o Use of Facebook Live